

SafeNet EdgeSecure

Protect Data at Distributed Locations with Unprecedented Ease

Key Features

Robust Security—

Addresses a broad range of threats with capabilities for robust field- or column-level encryption, secure policy and key management, sophisticated administration, segregation of duties, strong AAA support, and more.

Streamlined

Implementation—

Integration is automated and transparent to applications; administration is intuitive; and because all keys and policies are managed on a centralized appliance, ongoing maintenance is streamlined.

Scalability and Reliability—

Offloads processing-intensive cryptographic functions from servers, and offers throughput and high availability for even the most demanding environments, featuring capabilities for load balancing, failover, and disaster recovery.

Flexible, Multi-tier Integration—

Can be deployed easily at the Web, application, and/or database level—and a single appliance can support multi-vendor environments.

As enterprises look to combat the threat of devastating data thefts and address increasingly stringent compliance mandates like the Payment Card Industry (PCI) standard, deploying data encryption to secure sensitive information is becoming one of the most critical security objectives.

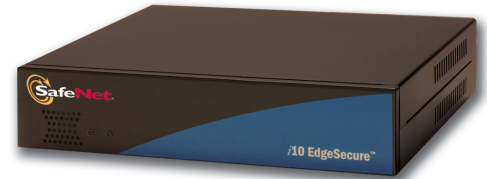
For many enterprises, securing sensitive data in applications and databases at the corporate data center has been the initial priority. For those organizations, SafeNet® DataSecure® appliances have become the leading standard. Today however, organizations must also encrypt data at retail store and bank branch locations. For many large institutions, this prospect has posed a significant challenge: How can they cost effectively implement data encryption in each of their remote locations, which can number in the thousands? Now, SafeNet offers a solution for addressing this challenge.

SafeNet EdgeSecure™ appliances enable organizations to encrypt sensitive data in hundreds or even thousands of remote locations, and to do so with unprecedented efficiency and cost effectiveness. The EdgeSecure solution is comprised of four components:

- The EdgeSecure appliance, a dedicated hardware system located at the retail or branch location.
- Connector software, a software component that is installed on the Web server, application server, database, or file system that interfaces with the DataSecure appliance.
- The DataSecure appliance deployed at the data center.

Centralized Management

EdgeSecure appliances are combined with DataSecure platforms to offer a streamlined, centralized management model for deploying encryption across hundreds or even thousands of geographically distributed locations. Through DataSecure, organizations can centrally manage



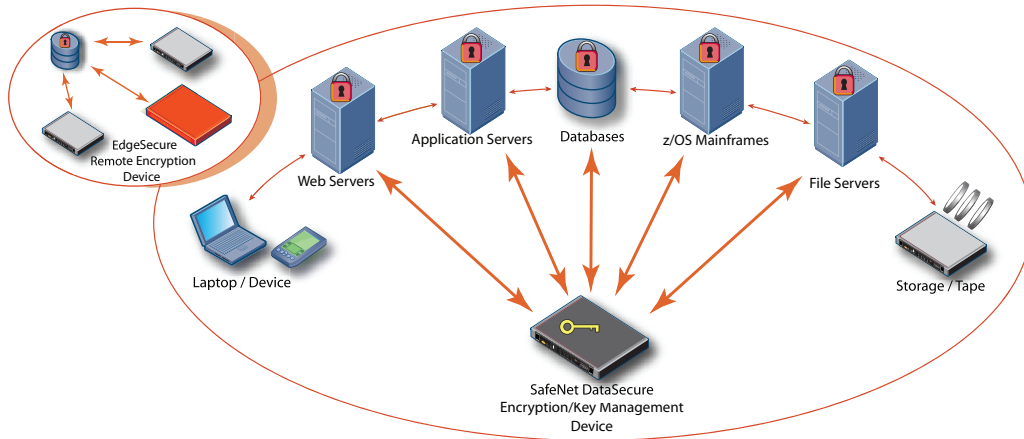
every facet of EdgeSecure administration, including key management, maintenance and troubleshooting, policy management, logging, reporting, and software upgrades

Robust Security Features

By deploying EdgeSecure appliances, organizations can ensure that sensitive data is secured at rest in retail and branch locations. The EdgeSecure's security features include:

- Centralized, flexible key management, featuring both physical and administrative safeguards.
- Centralized management, reporting, and maintenance of all EdgeSecure appliances across disparate sites.
- Secure, multi-factor authentication and access control between retail and bank branch applications and the EdgeSecure appliance.
- Granular authorization capabilities that enable constrain to be placed on user operations based on specific key permissions.
- Active alerting capabilities for notifying administrators in the event of unauthorized attempts to access protected data.
- Comprehensive, secure, and centralized logging and auditing of all cryptographic functions and access.





SafeNet EdgeSecure can be integrated at the Web, application, and database layer; and offers granular encryption, centralized security management, and seamless, flexible integration.

Streamlined Implementation

EdgeSecure appliances perform all cryptographic operations for batch processing and online transaction processing environments. By offloading CPU-intensive cryptographic processing from disparate retail and bank branch applications, EdgeSecure restores application performance to optimal levels. Designed specifically for businesscritical processing, EdgeSecure also feature replication, health checking, and disaster recovery capabilities.

Flexible Integration

Featuring support for heterogeneous environments and support for standards-based interfaces, EdgeSecure can be effectively integrated in a wide range of retail and branch store environments.

The EdgeSecure appliances offers support for leading, standards-based cryptographic algorithms: AES, 3DES, RSA, and others. The EdgeSecure appliance can be integrated into a wide range of retail store and bank branch environments.

Further, EdgeSecure appliances, and all SafeNet solutions, are based upon an integrated security architecture that provides customers with the solutions they need today—and the flexibility to adapt to future requirements. The SafeNet architecture features network cryptographic services, standards-based cryptography, application programming interfaces (APIs), and utilities. When combined, these components serve as the foundation for centralized security policy management and enable tight integration with an organization's broader security infrastructure.

Technical Specifications

Performance

- Processes 2,500 secure cryptographic operations per second
- Less than 250 microseconds latency

Security Algorithms

- 3DES, DES, AES, RSA (signatures and encryption), RC4, SHA-1, HMACSHA-1

Asymmetric Key Sizes

- 512, 1024, 2048

Symmetric Key Sizes

- 40, 56, 128, 168, 192, 256

Certificate Management

- Multiple certificates, built-in certificate authority, manage certificate requests, certificate revocation list (CRL) support

Network Management

- SNMP (v1, v2, and v3), NTP, URL health check, signed secure logs, syslog, automatic log rotation, encrypted and integrity checked backups and upgrades, extensive statistics

System Administration

- Secure Web-based GUI, secure shell (SSH), console

Web and Application Servers Supported

- BEA, IBM, IIS, Oracle, Apache, Sun ONE, JBoss, SAP and other POS environments

Enclosure

- Small Form Factor: Width: 11.625" (295.3 mm); Depth: 10.25" (260.3 mm); Height: 2.5" (63.5 mm) Gross weight: 7.9 lbs (3.8kg)

Processors

- One VIA C3 800MHz processor

Network Interfaces

- 1 - 10/100 Mbps



www.safenet-inc.com

Corporate Headquarters:

4690 Millennium Drive, Belcamp, Maryland 21017 USA
Tel.: +1 410 931 7500 or 800 533 3958, Fax: +1 410 931 7524,
Email: info@safenet-inc.com

EMEA Headquarters:

Tel.: + 44 (0) 1276 608 000, Email: info.emea@safenet-inc.com

APAC Headquarters:

Tel: +852 3157 7111, Email: info.apac@safenet-inc.com

For all office locations and contact information, please visit
www.safenet-inc.com/company/contact.asp

©2008 SafeNet, Inc. All rights reserved. SafeNet and SafeNet logo are registered trademarks of SafeNet. All other product names are trademarks of their respective owners.