

# SafeNet KeySecure

*Leverage Existing Encryption Investments—  
and Centrally Secure and Manage Keys*

## Key Features

### **Robust Security—**

*All cryptographic keys reside on a purpose built security appliance.*

### **High Performance—**

*Keys are managed on a high performance appliance—ensuring there is no perceptible impact on system performance.*

### **Broad Flexibility—**

*Standard APIs enable easy integration in a range of environments.*

### **Continuous Availability—**

*The enterprise-grade appliance offers onboard redundancy, replication, and disaster recovery features.*

In their efforts to better secure sensitive data and ensure compliance, enterprises have broadened their use of encryption. Today, it is common to have encryption deployed in everything from mobile devices to the tapes that are used for data storage. For many enterprises, however, the initial deployment of encryption was just the tip, while key management represented the rest of a very big iceberg.

Often, it is only after employing encryption that administrators fully realize just how important and challenging the management of cryptographic keys is. If a key gets lost, so does the data. If keys are compromised, so is the data. If a key repository goes down, so does the business. Further, the effort required for the ongoing maintenance of keys—for example, doing periodic key rotation—can represent a huge, ongoing effort.

For years, SafeNet® has been helping organizations gain the benefits of enterprise encryption, while optimizing the security and efficiency with which they manage cryptographic keys. Through SafeNet DataSecure®, organizations gain a flexible way to manage encryption in the data center and across the distributed enterprise.

Now, organizations looking to leverage existing investments in encryption products—while centralizing key management across the enterprise—can harness the SafeNet KeySecure™ 400 Series appliance. The KeySecure appliance offers organizations a way to leverage one or more disparate encryption solutions from different vendors, while enjoying the efficiency and security of a dedicated, centralized appliance for key management.

KeySecure offers robust capabilities for managing cryptographic keys across their entire lifecycle, including key generation, key import and export, key rotation, and much more. KeySecure can be integrated through open APIs with virtually any off-the-shelf encryption product, including database encryption, laptop encryption, file and storage level encryption, and more.



## Robust Security

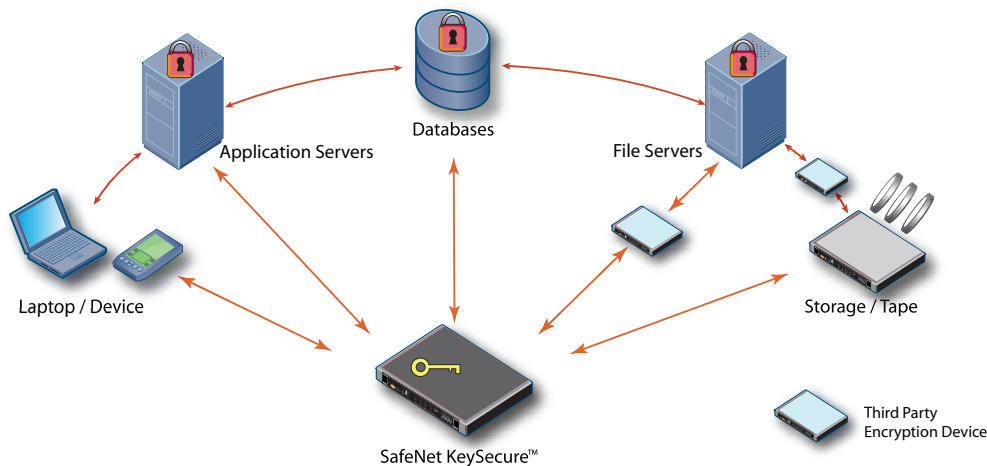
KeySecure centrally manages keys using a hardened appliance, which maximizes overall security. KeySecure offers a range of robust security features:

- Capabilities for segregating administrative duties between different administrators.
- Granular authorization capabilities that enable constraints to be placed on user operations based on specific key permissions.
- Active alerting capabilities so that, if attempts to breach protected data occur, mechanisms are employed to alert administrators.
- Secure key distribution through support of SSL.
- An appliance that is FIPS 140-2 Level 2 and Common Criteria EAL2 compliant.

## High Performance

KeySecure centralizes all key management on a highly specialized appliance that delivers robust performance. Even for large distributed enterprises that use multiple, disparate encryption solutions, keys can be centrally managed—without making any perceptible impact on system performance.





With the SafeNet KeySecure Appliance, organizations can leverage a range of disparate software and hardware-based encryption products, while gaining the efficiency and security benefits of having all keys stored on a centralized, hardened security appliance.

## Broad Flexibility

KeySecure offers key management capabilities that can be integrated with virtually any commercial encryption product. Supported technologies include:

- Application encryption, either software or hardware based.
- Database encryption, including native database encryption.
- Laptop and device encryption.
- z/OS mainframe encryption.
- File and storage level encryption solutions.

SafeNet supports a wide range of open cryptographic standard interfaces, including PKCS #11, JCE, MS-CAPI, and .NET. Further, customers and partners can take advantage of SafeNet's XML interface to develop their own custom software utilizing the enterprise key management functionality of KeySecure.

## Continuous Availability

SafeNet customers can deploy multiple KeySecure appliances in a clustered configuration with real-time replication of keys, policy, and configuration information across multiple appliances—enabling complete disaster recovery and business continuity. KeySecure also offers redundancy of hardware components, including power supplies and fans, along with multiple network interfaces and dual SCSI drives in a RAID-1 configuration.

## Technical Specifications

### Asymmetric Key Sizes

- 512, 1024, 2048

### Symmetric Key Sizes

- 40, 56, 128, 168, 192, 256

### Certificate Management

- Multiple certificates, built-in certificate authority, manage certificate requests, certificate revocation list (CRL) support

### Network Management

- SNMP (v1, v2, and v3), NTP, URL health check, signed secure logs, syslog, automatic log rotation, secure encrypted and integrity checked backups and upgrades, extensive statistics

### System Administration

- Secure Web-based GUI, secure shell (SSH), console

### Enclosure

- Form Factor: 2U, rack mountable (Height: 3.4"; Width: 17.6"; Depth: 29.8")

### Processors

- Dual Xeon 5130 processors, 2.0GHz

### Network Interfaces

- 2 x 10/100/1000 Mbps Fans
- Four system cooling fans

### Power Supplies

- Dual 750W redundant; 85 - 264 VAC, autoranging, 47 - 63 Hz, 2697 BTU/hr maximum

### Data Storage

- Two 3.5" internal hot-pluggable 80GB SATA drives

### Operating Environment

- Ambient temperature—operating: 10° to 35°C (50° to 95°F)
- Ambient temperature—non-operating: -40° to 65°C
- (-40° to 149°F) ambient
- Humidity—operating: 8% to 85% (noncondensing) with a maximum humidity gradation of 10% per hour
- Humidity—non-operating: 5% to 95% (noncondensing)
- Acoustic Noise: 66 decibels



[www.safenet-inc.com](http://www.safenet-inc.com)

#### Corporate Headquarters:

4690 Millennium Drive, Belcamp, Maryland 21017 USA  
Tel.: +1 410 931 7500 or 800 533 3958, Fax: +1 410 931 7524,  
Email: [info@safenet-inc.com](mailto:info@safenet-inc.com)

#### EMEA Headquarters:

Tel.: + 44 (0) 1276 608 000, Email: [info.emea@safenet-inc.com](mailto:info.emea@safenet-inc.com)

#### APAC Headquarters:

Tel.: +852 3157 7111, Email: [info.apac@safenet-inc.com](mailto:info.apac@safenet-inc.com)

For all office locations and contact information, please visit  
[www.safenet-inc.com/company/contact.asp](http://www.safenet-inc.com/company/contact.asp)

©2008 SafeNet, Inc. All rights reserved. SafeNet and SafeNet logo are registered trademarks of SafeNet. All other product names are trademarks of their respective owners.